

# SANITATION

Toilet accessories . . . . .	104
Sewerage accessories . . . . .	105
Portable toilets . . . . .	106
Portable toilet accessories . . . . .	107









SANITATION



**FIAMMA SOFT TOILET TISSUE**  
003610

Ideal for portable and cassette toilets thanks to its dissolving formula. Stronger and softer tissue that dissolves quickly in water.

**FEATURES:**

- Quickly disintegrates after use
- Strong and soft

**Specifications:**

- 300 sheets per roll
- Pack of 6



**WASTE PLUMBING KITS**

Comprises of: Ball valve, quick couples (1 x hosetail - 1 x male adapter) and 3 metre hose plus dust cap.

- 002869 25MM WASTE KIT VALVE/QUICK COUPLES AND HOSE
- 002874 32MM WASTE KIT VALVE/QUICK COUPLES AND HOSE
- 002886 40MM WASTE KIT VALVE/QUICK COUPLES AND HOSE

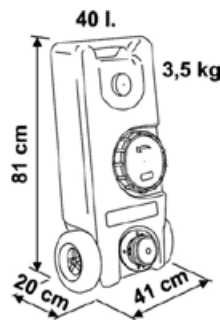
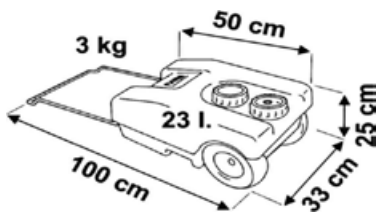


**THUNDER DOWN UNDER TOILET**  
043838

Line the Elemental Thunder Down Under Toilet with the Elemental Thunder Down Under Toilet Bags and you can easily dispose of your waste. The high-density polyethylene construction is built to last, and the 20L holding capacity is suitable for individuals or families.

**FEATURES:**

- High density polyethylene construction
- 20L holding bucket



**FIAMMA ROLL TANK - WASTE WATER 23 LITRE**  
003409

Practical and portable 23litre roll tank for waste water with total discharge cap. Compact size and grey in colour.

**FIAMMA ROLL TANK - WASTE WATER ROLL TANK - 40 LITRE**  
003410

Complete with level indicator & air release valve. 45° angle adapter for discharge is included.

**FIAMMA ROLL-TANK FRESH WATER TANK**  
003016 23 LITRE  
002999 40 LITRE

Portable drinking water roll tank with easy grip handle and two large wheels that make transportation easy even on gravel.

Made of non-toxic material.

**ROLL TANK SPARE PARTS**

- 001010 PLASTIC SCREW CAP FOR 23L ROLL TANKS
- 003016 / 003409
- 001094 ROLL TANK LEVEL GAUGE
- 001255 SPARE WHEEL FOR ROLL TANK
- 001257 BAYONET CAP FOR FIAMMA TANK 002999 / 003410
- 004227 FIAMMA ROLL TANK SCREW CAP & WASHER



**VALTERRA SLIDE VALVE AND CAP**  
040893

**INCLUDES:**

- Slide valve
- Flange bayonet
- Cap

Hose and fittings not included.



**SEWER HOSES**  
040887 10' NO FITTINGS  
040888 20' NO FITTINGS



**VALTERRA HOSE ADAPTOR 45° BLACK**  
040877



**VALTERRA FLANGE BAYONET 3"**  
040876



**VALTERRA HOSE ADAPTOR STRAIGHT BLACK**  
040891



**VALTERRA TERMINATION CAP AND STRAP**  
040894



**FIAMMA TERMINATION CAP AND SMALL TUBE**  
043572

For 40 litre roll tank.



**VALTERRA SEAL REPLACEMENT 3"**  
040875



**THETFORD UNIVERSAL ADAPTER**  
001016

Suits Valterra fitting on a Thetford system.



**FIAMMA ROLL-TANK REPLACEMENT RED SCREW CAP AND SEAL**  
001018



**VALTERRA DRAIN HOSE CAP**  
040385

Facilitates easy storage when caps are installed while hose is compressed. Just twist them on and you're ready to go. Hose cap only.



## PORTABLE TOILETS

**CAMEC PORTABLE TOILETS**

044062 10 LITRE  
044063 20 LITRE

**FEATURES:**

- 12 litre fresh water top tank
- Full-size seat and lid for comfort and support
- Detachable holding tank with large discharge opening
- Empties in one easy motion
- Easy to clean, matte finish
- One piece tank constructed from high density polyethylene material, will not leak
- Leaks and odours prevented by double sealed valve
- Heavy duty side clips to securely fasten both tanks together

**SPECIFICATIONS - 10 LITRE:**

- Dimensions: 365mm(w) x 300mm(h) x 415mm(d)
- Capacity: 10 litre waste holding bottom tank
- Weight: 4.8kg

**SPECIFICATIONS - 20 LITRE:**

- Dimensions: 365mm(w) x 420mm(h) x 415mm(d)
- Capacity: 20 litre waste holding bottom tank
- Weight: 5.7kg

**CAMEC PORTABLE TOILET CARRY BAGS**

042936 10 LITRE  
042937 20 LITRE

Carry handles to make transporting your Camec Portable Toilet even easier!

**FEATURES:**

- Heavy duty fabric

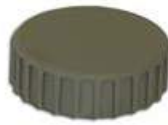
**SPECIFICATIONS:**

- 10 Litre: 430mm(h) x 370mm(w) x 320mm(d)
- 20 Litre: 430mm(h) x 370mm(w) x 430mm(d)





CAMEC PORTABLE TOILET SEAT AND LID  
042500



CAMEC PORTABLE TOILET FRESHWATER CAP  
042502



CAMEC PORTABLE TOILET SLIDE VALVE  
042501



CAMEC PORTABLE TOILET WASTE CAP  
042503



CAMEC PORTABLE TOILET CLIP  
042505



CAMEC PORTABLE TOILET SEAL  
042504

